

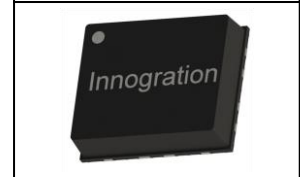


GaN 50V, 100W, 2.45GHz RF Power Transistor

STBV25100C9

Description

The STBV25100C9 is a single ended 100 watt capable, GaN HEMT, ideal for ISM applications at 2.45GHz. The device offers a more cost effective solution than traditional ceramic device, housed in 12*10mm cost effective plastic open cavity package, and heat dissipated by copper flange directly. There is no guarantee of performance when this part is used outside of stated frequencies.



- Typical RF performance at selected 2.4-2.5GHz applications with device soldered

V_{DD} = 50Vdc, V_{gs} = -4V

Freq (MHz)	P1dB (dBm)	P1dB (W)	P1dB Eff(%)	P1dB Gain(dB)	P3dB (dBm)	P3dB (W)	P3dB Eff(%)
2400	50.66	116.4	72.1	16.93	50.9	123.1	73.2
2450	50.16	103.7	73.1	17.12	50.56	113.7	74.8
2500	49.53	89.7	71.9	16.55	50.14	103.2	74.2

Applications

- 2.45GHz RF Energy
- S band power amplifier

Important Note: Proper Biasing Sequence for GaN HEMT Transistors

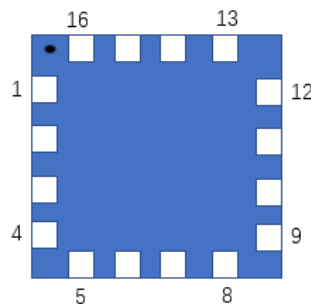
Turning the device ON

1. Set V_{GS} to the pinch-off (V_P) voltage, typically -5 V
2. Turn on V_{DS} to nominal supply voltage
3. Increase V_{GS} until I_{DS} current is attained
4. Apply RF input power to desired level

Turning the device OFF

1. Turn RF power off
2. Reduce V_{GS} down to V_P, typically -5 V
3. Reduce V_{DS} down to 0 V
4. Turn off V_{GS}

Pin Configuration and Description (Top view)



Pin No.	Symbol	Description
5-8	RF IN/V _{gs}	RF Input/Gate bias
13-16	RF OUT/V _{ds}	RF Output/Drain bias
1-4, 9-12	NC	Can be left as either no use or grounding
Package Base	GND	DC/RF Ground. Proposed to be soldered to heatsink plane directly for the best CW thermal and RF performance. Soldered through vias or copper coin allowed for pulsed CW applications, but will result in excessive junction temperatures and different RF performance



Table 1. Maximum Ratings

Rating	Symbol	Value	Unit
Drain--Source Voltage	V_{DSS}	+200	Vdc
Gate--Source Voltage	V_{GS}	-8 to +0.5	Vdc
Operating Voltage	V_{DD}	55	Vdc
Maximum gate current	I_{gs}	16	mA
Storage Temperature Range	T_{stg}	-65 to +150	°C
Case Operating Temperature	T_c	+150	°C
Operating Junction Temperature	T_J	+225	°C

Table 2. Thermal Characteristics

Characteristic	Symbol	Value	Unit
Thermal Resistance, Junction to Case by FEA $T_c = 85^\circ\text{C}$, at $P_d = 35\text{W}$	$R_{\theta JC}$	2.5	°C /W

Table 3. Electrical Characteristics (TA = 25°C unless otherwise noted)

DC Characteristics (Each path, measured on wafer prior to packaging)

Characteristic	Conditions	Symbol	Min	Typ	Max	Unit
Drain-Source Breakdown Voltage	$V_{GS} = -8\text{V}$; $I_{DS} = 16\text{mA}$	V_{DSS}		200		V
Gate Threshold Voltage	$V_{DS} = 10\text{V}$, $I_D = 16\text{mA}$	$V_{GS(th)}$	-4	-	-2	V
Gate Quiescent Voltage	$V_{DS} = 48\text{V}$, $I_{DS} = 140\text{mA}$, Measured in Functional Test	$V_{GS(Q)}$		-3.1		V

Ruggedness Characteristics

Characteristic	Conditions	Symbol	Min	Typ	Max	Unit
Load mismatch capability	2.45GHz, $P_{out} = 100\text{W}$ pulse CW All phase, No device damages	VSWR		10:1		

TYPICAL CHARACTERISTICS

Figure 1: Efficiency and power gain as function of Pout

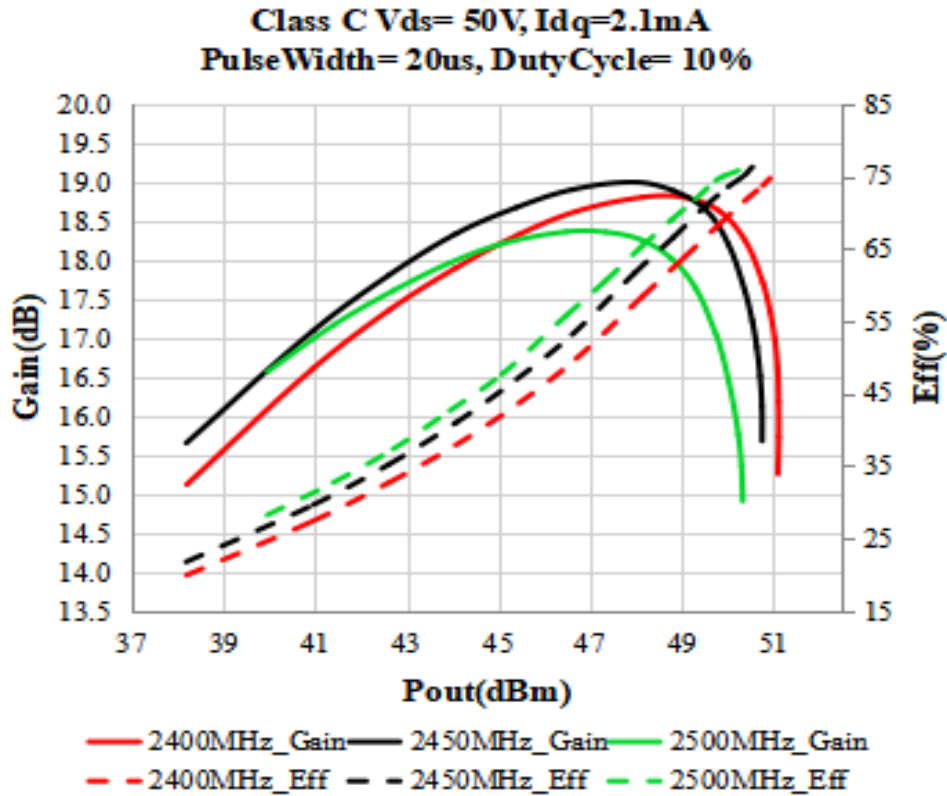


Figure 2: S11/S21 output from Network analyser

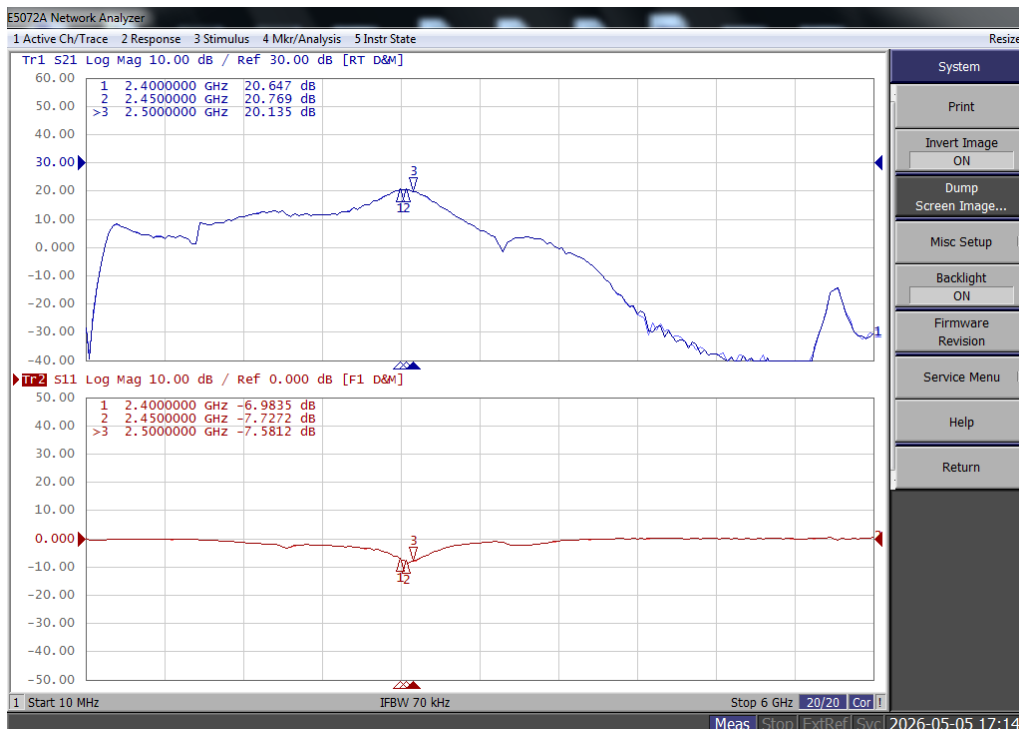
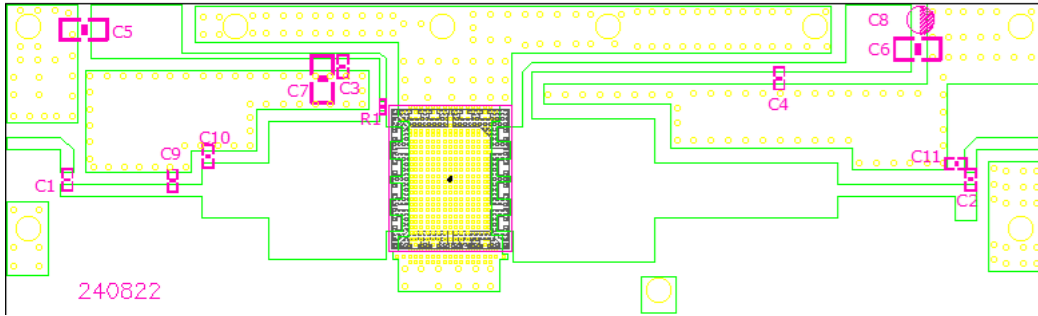


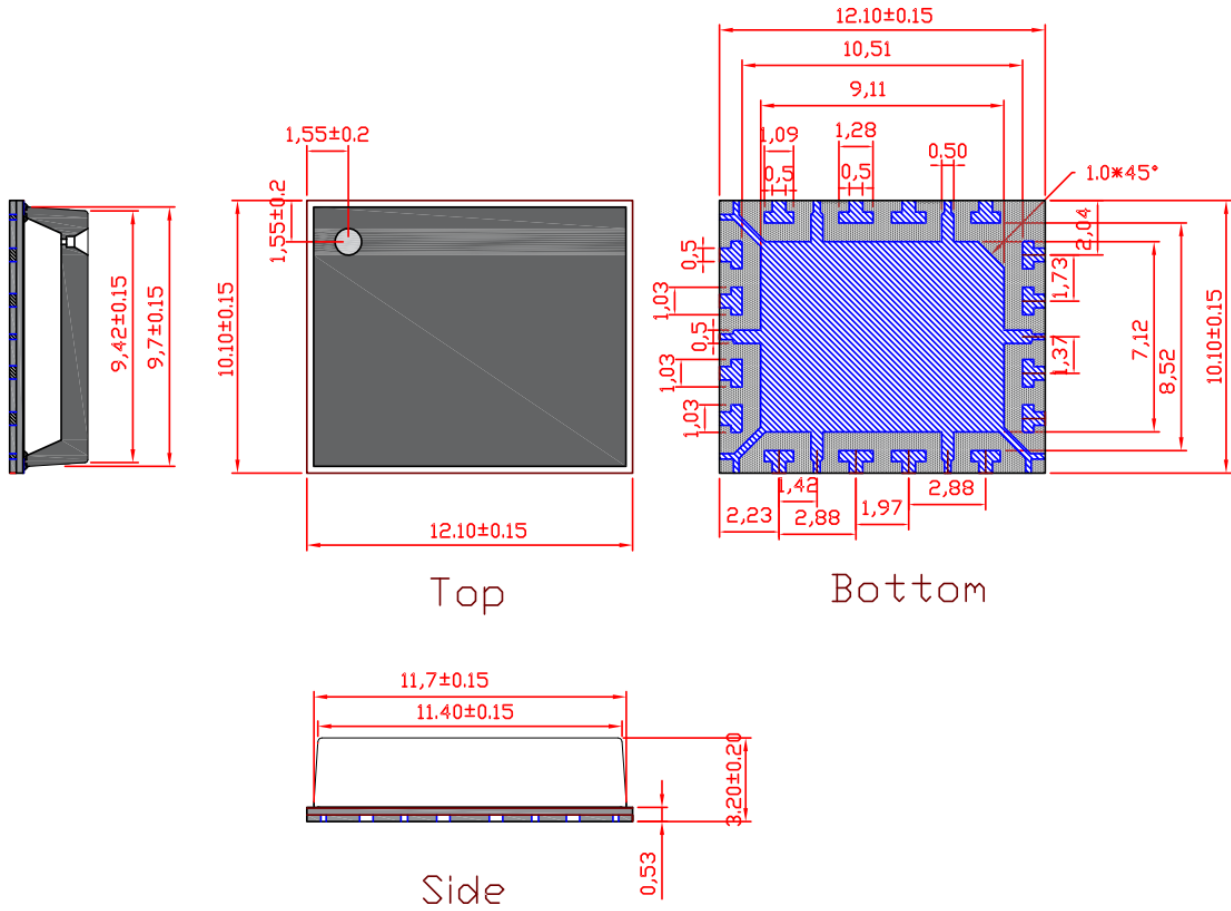
Figure 3: Reference design circuit (RO4350B 20mil, PCB DWG file upon request,)



Designator	Comment	Footprint	Quantity
C1, C2, C3, C4	12 pF	0603/0805 (HIGH Q)	4
C5, C6, C7	10 uF/100V	1210	3
C8	470uF/63V	/	1
C9	1.5pF	0603	1
C10	0.4pF	0805	1
C11	0.6pF	0805	1
R1	10 Ω	0603	1



Package Dimensions (Unit:mm)



Revision history

Table 1. Document revision history

Date	Revision	Datasheet Status
2026/5/6	Rev 1.0	Preliminary Datasheet

Application data based on HZH-26-16

Disclaimers

Specifications are subject to change without notice. Innogrations believes the information contained within this data sheet to be accurate and reliable. However, no responsibility is assumed by Innogrations for any infringement of patents or other rights of third parties which may result from its use. No license is granted by implication or otherwise under any patent or patent rights of Innogrations. Innogrations makes no warranty, representation or guarantee regarding the suitability of its products for any particular purpose. "Typical" parameters are the average values expected by Innogrations in large quantities and are provided for information purposes only. These values can and do vary in different applications and actual performance can vary over time. All operating parameters should be validated by customer's technical experts for each application. Innogrations products are not designed, intended or authorized for use as components in applications intended for surgical implant into the body or to support or sustain life, in applications in which the failure of the Innogrations product could result in personal injury or death or in applications for planning, construction, maintenance or direct operation of a nuclear facility. For any concerns or questions related to terms or conditions, pls check with Innogrations and authorized distributors

Copyright © by Innogrations (Suzhou) Co.,Ltd.